



- 02 WELCOME  
Meet the Contractor
- 03 #FutureRingland  
Community  
Spencer Boys FC
- 04 Unity Fun Day  
Site Safety
- 05 Constructing Futures  
Contact  
Keeping Updated

# NEWSLETTER

September  
2018

Keeping you updated on the Cot Farm Development

## Newport City Homes names **Lovell** for Cot Farm regeneration

Housing association Newport City Homes has appointed Lovell for the £7.5 million first phase of a wide-ranging regeneration programme set to revitalise the Ringland area of Newport in South Wales.

Lovell will start work this September on the redevelopment at the Cot Farm Estate, which will bring 56 modern homes and apartments for social rent to the area.

The design and build scheme will create 26 modern two- and three- bedroom homes and 30 one- and two- bedroom apartments on land at Hendre Farm Drive. A number of existing maisonettes will be demolished to make way for them. Due for completion in Spring 2020, the scheme is the first element in a wider transformation of Ringland, which follows extensive consultations with the local community.



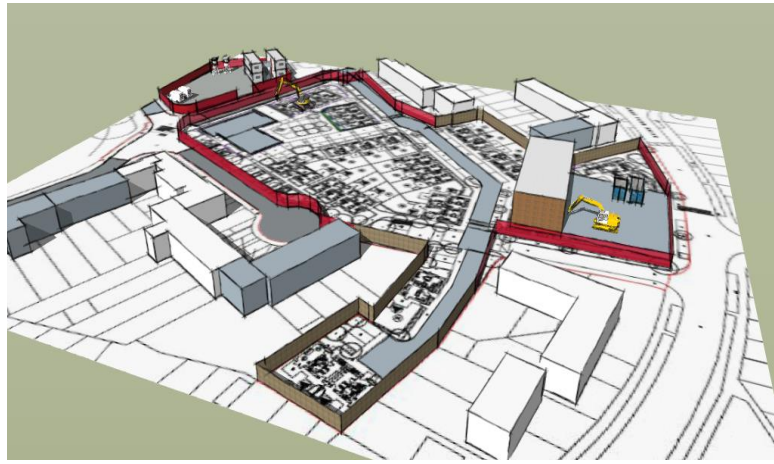
# Welcome



Welcome to my first update of the project, my name is Paul Phillips and I am the Build Manager overseeing the construction phase of the development.

Lovell is delighted to be working with Newport City Homes to build and deliver this exciting re-development of the Cot Farm estate.

Just to give you a bit of background on myself, I have worked at Lovell for ten years and was previously the Site Manager on our Ringland Regeneration development, in 2008-2009, as well as other flagship schemes such as Loftus Garden Village in Newport.



# 12

## Meet the Contractor

Newport City Homes & Lovell invite you to an informal drop-in event about the re-development of the Cot Farm estate.

Unit 7, Ringland Shopping Centre,  
NP19 9HJ - from 2-7pm

I am pleased to advise that works to the Cot Farm estate are due to commence soon. The main construction works are due to commence in late September, initially on the drainage and road infrastructure.

Demolition of the existing building will take around 8 weeks, the first 4 weeks will be soft-stripping; removing cabling, pipework, plasterboard and non-recyclable products. We allow a further 4 weeks to demolish the building, starting from roof level and working our way down. A dust suppression system consisting of a fine mist water spray will be available on site to reduce dust (if required).

In the meantime we will keep you informed and updated on a regular basis as we progress on our site notice board.

Due to the proximity to the local school, deliveries will only take place between 9:30am-2:30pm to minimise the impact on the school run. Site hours will be from 8am-6pm from Monday to Friday and 8am-1pm on Saturdays. No work will be carried out on Sundays or Bank Holidays. There will be a gate person on-site to monitor traffic and we plan on implementing a one way system in and out of site.

## Estimated Site Start

We are currently aiming to start on site at the end of September, with the first operations on site to include demolition, site set up and commencement of drainage and road infrastructure.





## Community Coordinator Bernie is making an impression

Getting involved and helping the local community is one of the most important aspects of what Lovell does when working on a project. This is why our Community Coordinator Bernie has already engaged with Milton Primary School and Ringland Primary school, to organise our involvement with them when the school year starts in September. Lovell tailor makes events to fit into a schools curriculum, ensuring that they get the most out of the activities.

We have also met with Llanwern High School to provide curriculum support to assist with their BTEC built construction course. One of the most important things we do is provide context for their learning, so that they truly understand what it means to work in construction.



#FutureRingland

You can keep updated with the project on our Twitter page;

@NewportCityH and through the hashtag #FutureRingland



# Spencer Boys FC



Spencer Boys Football Club was formed in 1971 and since then it has had a big influence on many residents in Ringland and the surrounding areas.

Until a few years ago the Junior presence at the club had dwindled, but with the help of a growing group of volunteers the club now provides football for over 75 children aged 5-12 and they are adding to that and growing year on year. This committed group of volunteers are a football family and with the help of the local community have raised money to carry out a long overdue refurbishment of the clubhouse which is now a safe and welcoming place for their teams, opposition teams and their families to gather on training and match days and is something as a club they are really proud of.

As well as continuing to grow their plans for the future to run as a sustainable club and try to encourage more boys and girls to keep active, meet new friends, learn new skills and develop a love for football, they would also like to encourage more volunteers to take on various roles at the club ensuring they have succession both through the club structure and with their junior football age groups. Once their older teams reach the right age they want to keep them to stay involved with the club by taking on roles or introduce them to coaching the youngsters and playing senior football so the club is able to run both Junior and Senior sides.

Interested in finding out more? Contact [Ryan Brickell](mailto:ryanbrickell@hotmail.com) at [ryanbrickell@hotmail.com](mailto:ryanbrickell@hotmail.com) & 07795523171

# Unity Fun Day



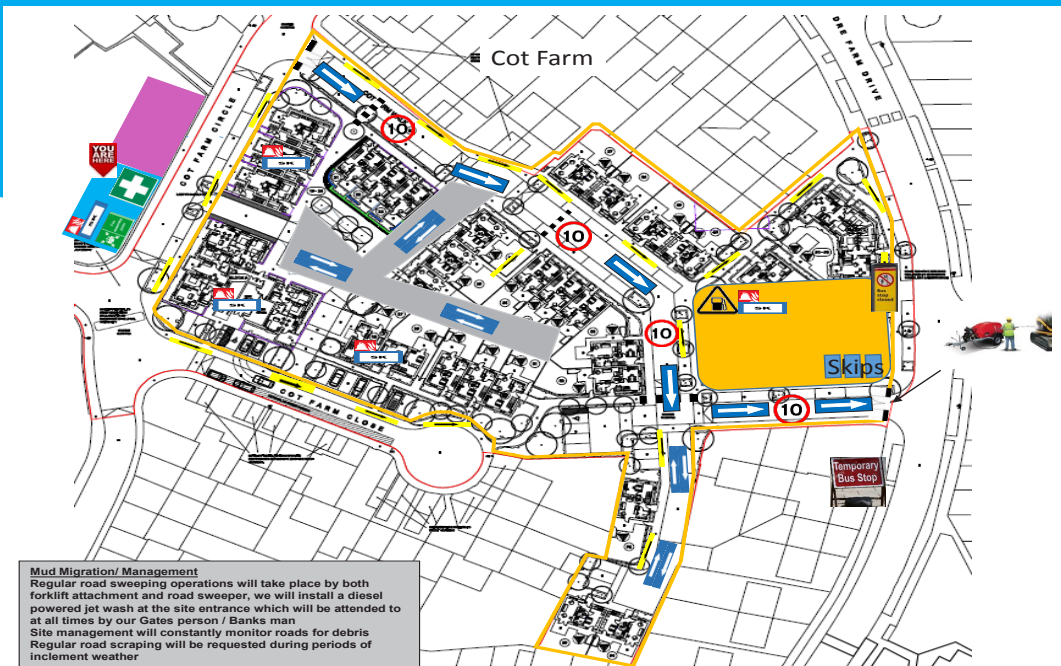
Lovell recently attended a 'help the homeless' event in Ringland organised by [UNITY](#), a youth forum supported by Newport City Homes and Charter Housing. It was our first opportunity to meet the local community and for you to meet our Technical team to discuss the upcoming development.

The event behind Ringland Shopping Centre included a funfair, face-painting, stalls, sports activities and information stands such as Lovell's.

It was a hugely successful day that not only raised £500 for charity, but allowed us to introduce ourselves and the development to members of the community.

We're looking forward to discussing everything in more detail at our [Meet the Contractor](#) event on the [12th of September, from 2-7pm](#).

## Site Safety & Management



Site Hours: 8am-6pm

Deliveries restricted to between  
9:30am-2:30pm

We will shortly be installing CCTV around the site to offer added security and reassurance to the local community.

It's important to remember that construction sites can be dangerous, which is why it's important that if you notice any suspicious behaviour or children playing near the site to report it immediately using the contact details overleaf.



# Constructing futures

Don't forget there are apprenticeships and work experience opportunities available at our Cot Farm development.

Including:

Apprentice [Carpenters](#)

Apprentice [Bricklayer](#)

Apprentice [Plumber](#)

Apprentice [Electrician](#)

Interested or know someone that might be?

Apply on line at <http://morgansindallgroupcareers.com/lovell/apprenticeships/>

Or email your CV to our project skills co-ordinator Nicola Murray at [nicola.murray@lovell.co.uk](mailto:nicola.murray@lovell.co.uk) or call on 07816605212



## LOVELL PROJECT TEAM



PAUL PHILLIPS  
Build Manager  
07970953876



BERNADETTE VICKERY  
Community Coordinator  
07966 976201



NICOLA MURRAY  
Project Skills Co-ordinator  
07816605212



JAMES POOLE  
Technical Manager

### THERE ARE TWO WAYS YOU CAN CONTACT US TO ASK QUESTIONS OR DISCUSS SITE DEVELOPMENTS

- Contact our Build Manager Paul Phillips - between the hours of 8am-5pm
- Contact our out of hours emergency number, if your call is outside of working hours

## Keeping updated

To make sure you're kept fully updated with what will be going on, on-site we have erected a noticeboard near to the Ringland Shopping Centre. The noticeboard will have plenty of information including a site plan, copy of our newsletter and details of the site team as well as their contact information!



If your call is an emergency and outside of working hours please contact 0845 600 7696 Quoting Postcode: NP19 9JR

If you require a copy of this newsletter in large-print, please contact Jess Trought on 07815 238226